

## AIC has successfully started three orders from Gerdau Canada for the rolling mill train.

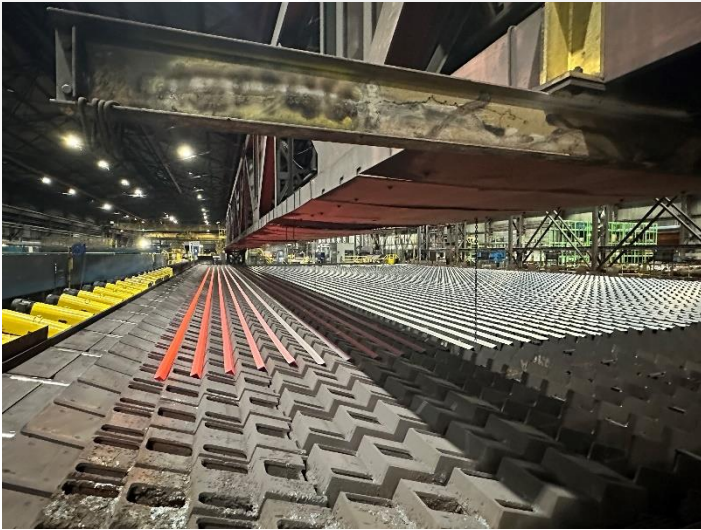
Gerdau Whitby first commissioned AIC project (Automazioni Industriali Capitano) for their Structural Mill in 2014, marking the beginning of a successful and enduring collaboration. For the past decade, AIC has reliably provided advanced automation and power solutions to optimize Gerdau Whitby's operational efficiency.

The initial project in 2014 focused on the automation and power components of the mill's cooling bed area, which were fully engineered and delivered by AIC.

In 2022, AIC upgraded the mill's rougher drives, further solidifying the trust Gerdau Whitby had in AIC's expertise. Following the success of this installation, Gerdau Whitby placed additional orders with AIC to manage the intermediate drives, finishing drives, and the complete control system for the entire rolling, that was commissioned this summer 2024, with successful startup after only 10 days outage. Plant was back at full production starting day 1 after the outage.

As a result, today, the entire power and control system for the Gerdau Whitby Structural Mill's rolling mill is engineered and supplied by AIC, highlighting the enduring strength of the partnership between Gerdau and AIC.





### About Companies:

**AIC Group** is a technological partner with extensive experience and deep know-how and stands itself as a global power control supplier and system integrator designing, manufacturing, and implementing automation systems, process control, and mechatronic solutions for both greenfield and revamping projects. Focusing on the steel and metals industries for long and flat products, the Group provides cutting-edge technical solutions by handling complex project schedules and thus establishing satisfactory and remarkable partnerships through its 6 international offices.

More than 45 years of modernization for endless reliability processes.

**GERDAU** is a leading producer of long steel in the Americas and one of the largest suppliers of special steel in the world. Gerdau's North American business division focus on long steel (Gerdau GLN) and special steel products including beams and piling, merchant bar quality, rebar, special bar quality and wire rod products. The company serves the construction, automotive, agricultural, service center and energy markets through its vertically integrated network of steel mills, recycling, and downstream processing facilities.

### For more information:

Katia Solvesi  
Head of Marketing of AIC Group  
Email: [katia.solvesi@aicnet.it](mailto:katia.solvesi@aicnet.it)  
Tel: +39 0365 826333



### For business inquires:

Antonio Ambra  
Managing director AIC NA  
Email: [antonio.ambra@aicnet.it](mailto:antonio.ambra@aicnet.it)  
Tel: +1 551 277 8918