

AIC confirmed as main partner of Thai Steel Profile for a new 500 ktpy rolling mill

Following a several years long partnership with Thai Steel Profile Co. Ltd., AIC received the order of the electrical and automation part of the new rolling mill that will be installed in Rayong, Thailand.

The new 500 ktpy rolling mill, planned for commissioning within the end of 2015, will include 18 stands (horizontal, vertical and convertible), 3 Start Stop shears, a 78 meters long cooling bed and a bar counter.

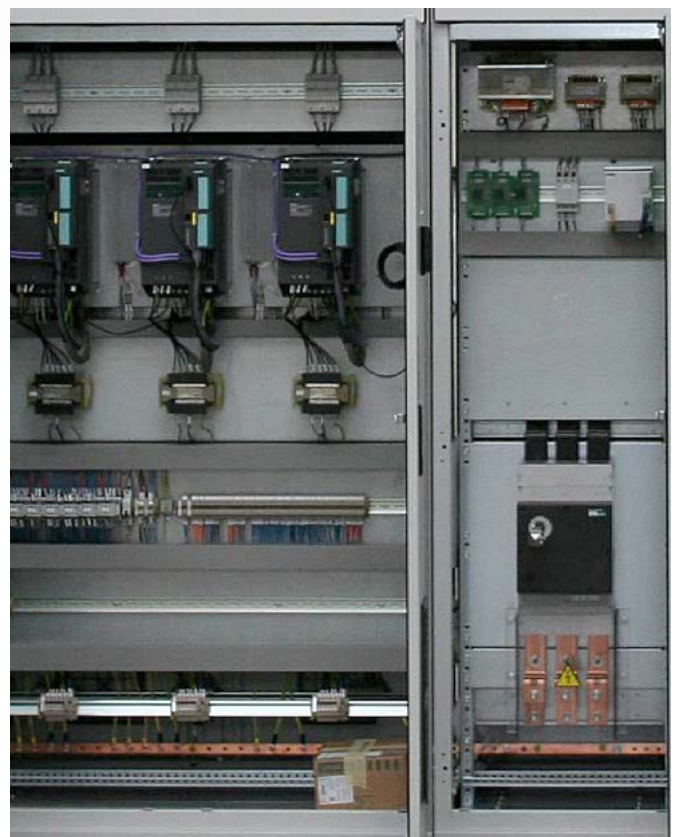
Production will range from 9 to 40 mm diameter rebar, including two- and four- slit modes for smaller diameters.

AIC scope of supply includes all drive panels (DC for main drives and AC for auxiliaries), DC and AC motors, sensors, PLC and IT equipment for the control of the entire rolling mill.

AIC automation will control the rolling mill from the billet out of the furnace to the finished bundle delivery, with specific solutions for rolling mill, Start/Stop shears, cooling bed area, bar counter, bundling, HMI and PDA systems. The entire new system will be equipped with standard devices, as one of AIC commitments is to avoid supplying black-box solutions, to protect customer investment in time and freedom of choice.

All panels, control desk and IT equipment will be built and tested in AIC workshops, ensuring the quality standard that always distinguished AIC supplies.

This is for AIC and Thai Steel Profile the third major project together, following the revamping of the existing rolling mill (commissioned in 2012) and the upgrade of the same rolling mill to extend its product range to coils and profiles (to be commissioned in 2016).



Command and control panel supplied by AIC to Thai Steel Profile