

AIC India Commissions Fast Finishing area in quick time.

AIC recently commissioned the Fast Finishing area of the rolling mill in quick time for a customer located in the State of Uttar Pradesh, India. The equipment to be controlled comprised of the following elements:

- Pinch rolls upstream and downstream the water box;
- Low Speed Shears;
- High speed Continuous shear with Pneumatic diverter;
- Tail Braking Pinch rolls;
- Twin Channel;
- Rake.

The control of the a.m. equipment is implemented using Siemens based Simotion units together with dedicated motion planning algorithms, drive parameter optimization and fine-tuning parameters recording developed by AIC together with high performance drive systems supplied by our partner SDA. The scope of supply of the control system also includes the following:

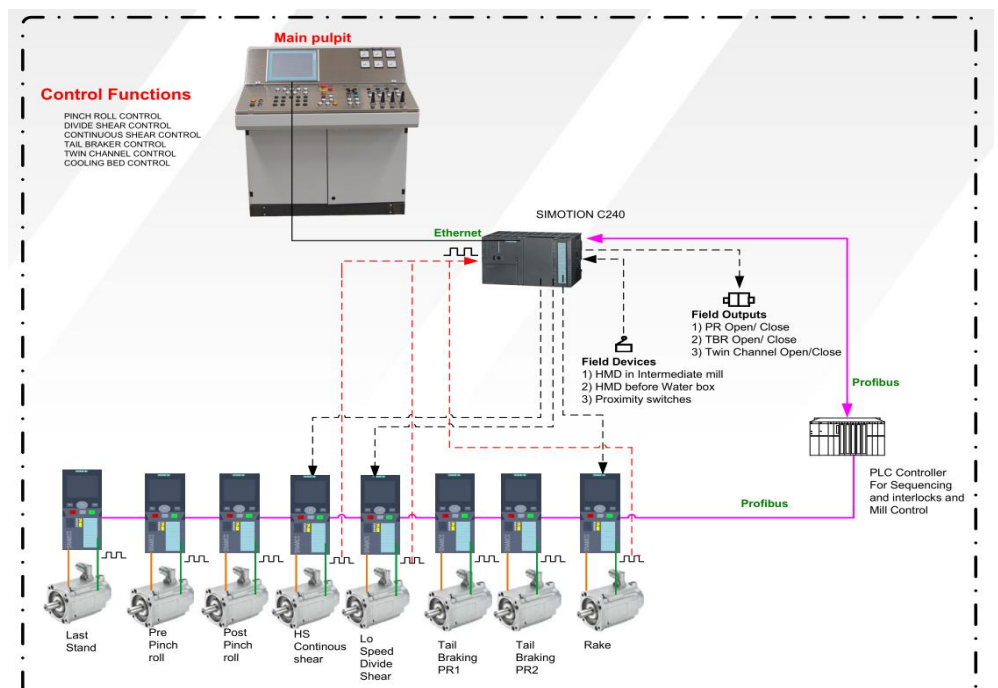
- Application software for the high / Low speed lines;
- HMI software development integrated with existing Mill HMI;
- Engineering and technical documentation;
- Equipment tests, supervision to erection, commissioning, training and production assistance.

Fast dynamic motion applied to rotating blades and diverter are necessary to deliver highly versatile and accurate rotating shears, capable of doing cut to measure at a speed of up to 40m/s. The big challenge is to use the same motion control system for both parts, optimizing it for the two different tasks and to achieve repeatability of the operations right from the first bar. Thanks to its long-time experience and know-how in shears control applications, the following results were achieved during the initial phase of commissioning:

- Maximum rated speed :17m/s Limited by the last stand speed;
- Cut length accuracy of < 100mm for 8mm bar resulting in maximizing the yield per billet;
- No cobble at High speed ensured by perfect synchronization of blade position and Diverter movement resulting in less wastage;
- Quick learning curve ramping up to rated production capacity;
- Remote assistance if necessary.



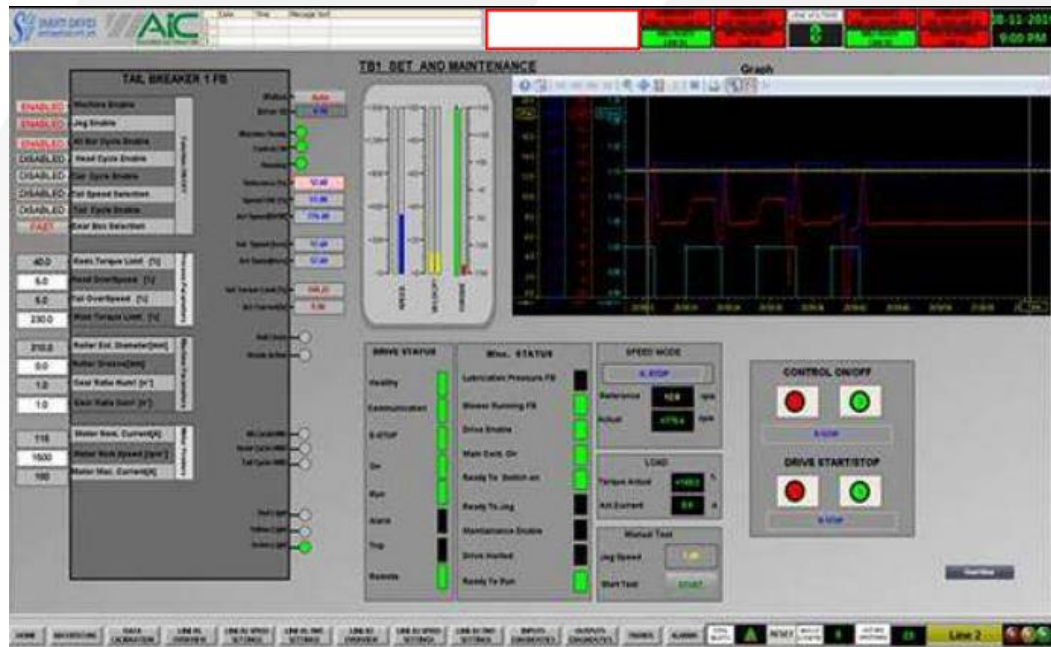
PLC Cabinets supplied by AIC



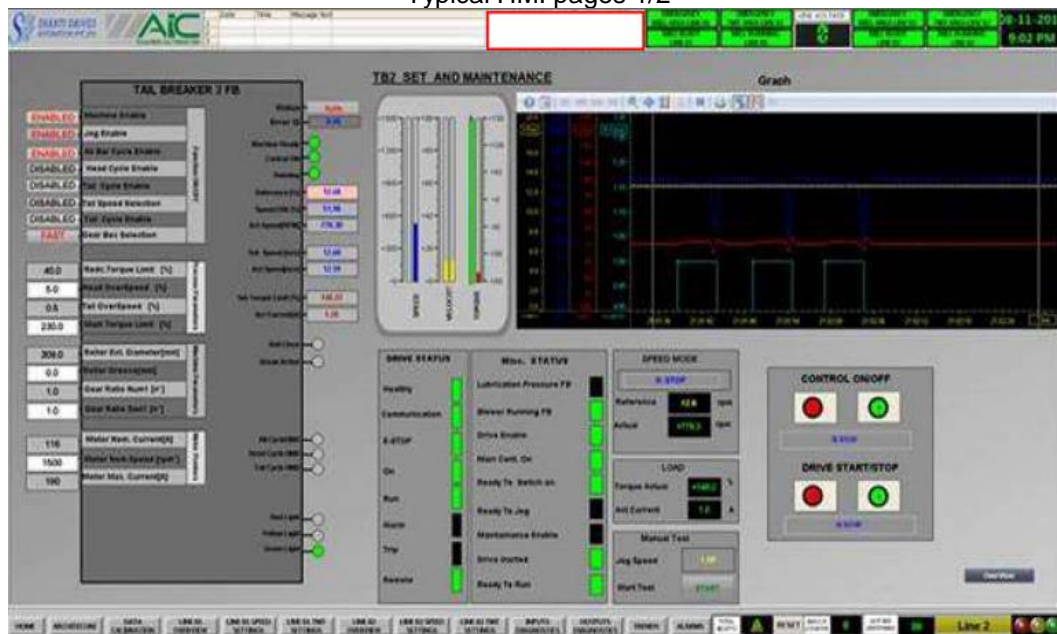
Typical Automation Configuration using motion control from AIC and Drive system supplied by our Partner SDA

AIC Automazioni Industriali Capitano sites:

- Italy (Headquarters, Engineering & Workshops)
- United States of America (Sales & Service)
- India (Sales, Engineering & Service)
- Brazil (Sales, Engineering & Service)



Typical HMI pages 1/2



Typical HMI 2/2

AIC is a global system integrator providing advanced and tailored automation and robotic solutions for the steel industry, with the aim to continuously improve both efficiency, competitiveness and safety of the production processes. With more than 1000 applications worldwide and more than 40 years of history, AIC can boast a unique experience in both greenfield and revamping projects in meltshops and long products rolling mills.

This press release is available at
- <http://www.aicnet.it/rassegna-stampa/>

Contact for journalists:
Mrs. Milena Saba
- email: milena.saba@aicnet.it
- Tel: +39 0365 826333

- AIC Automazioni Industriali Capitano sites:**
- Italy (Headquarters, Engineering & Workshops)
 - United States of America (Sales & Service)
 - India (Sales, Engineering & Service)
 - Brazil (Sales, Engineering & Service)